

Tech report I, part I: lighting proposal memo

Jack Risser | lighting/electrical | S. Good | the nerman museum | overland park, kansas | sept 9th, 2013

Proposed areas of study:

I. Café (proposed circulation area)

The museum café is located on the first floor creating a pivot point between the solarium and the main entrance corridor. Located at the axis of the two main entrances, it makes an ideal spot to meet and socialize with other patrons. It is approximately 1,450 sq. ft. The challenge for this space will be managing the narrow space to make it feel open to the adjoining areas and making it stand out while fitting into the overall feel and language of the architecture.



II. Solarium (proposed substitute for outdoor area)

Connecting the adjacent existing college building to the museum is the glass enclosed Solarium. Two sides and the roof are wrapped in glazing to provide an outdoor experience while keeping a familiarity with the inside architecture. It is approximately 3,094 sq. ft. The three sides covered in glass will prove as the challenge in this space making it a great area for day-lighting. Glare and visual comfort will be studied here in detail with consideration to different types of glazing and/or controls.



III. Auditorium (special event area)

The auditorium is uniquely shaped on the second floor, just off the gallery spaces. The space is shaped in a quarter circle, making it an interesting area to study how to light effectively. It has one large window on the one side wall and a sloped ceiling currently. This area would make a great architecture breadth to redesign the ceiling and/or the window location. Bringing more daylight into the space in a creative way would be challenging and satisfying for the space as it relates to the building as a whole. It is approximately 2,250 sq. ft.



IV. Gallery Space (proposed work area)

The museum cannot be studied without developing a design for an art gallery space. The space to be designed would be the large gallery space located in the cantilever part of the building that houses a permanent collection. It is approximately 1,840 sq. ft. This space will have very different qualitative and quantitative requirements than the others proposed and will be very technically driven in design. Function wise, it is one of the most challenging spaces and even more so because of the day-lighting techniques already implemented in the space. This will be a great area to learn more about lighting a piece of art work, as well as the technical requirements involved in making a successful lighting scheme that speaks to the rest of the architecture.



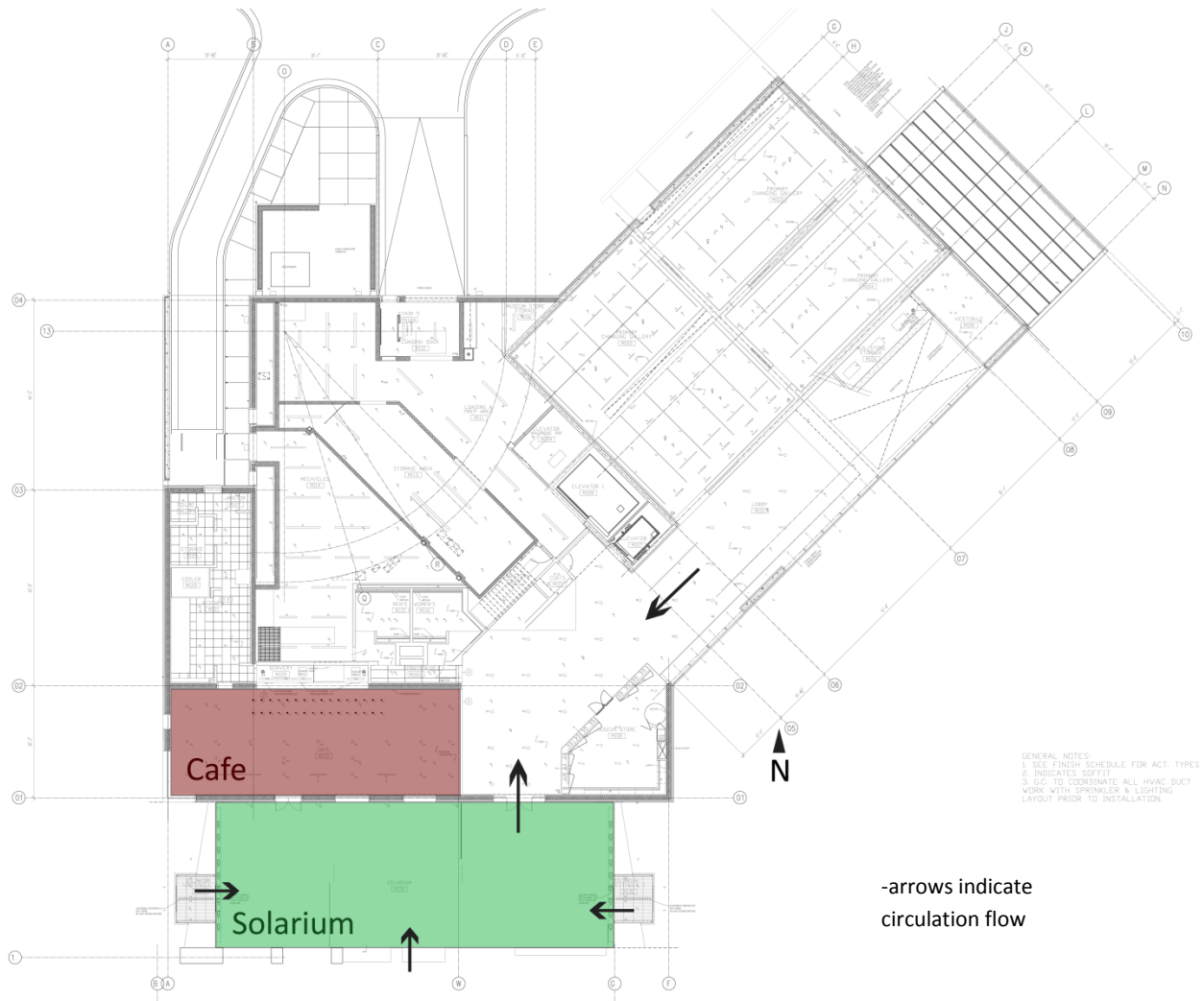
Proposed three schematic designs for one space:

Because the solarium has a lot of day-lighting potential, is a main connection point for the building, and is a multistory space, it has many re-design options to think through. For that reason I will use this space to propose three different schematic designs for review.

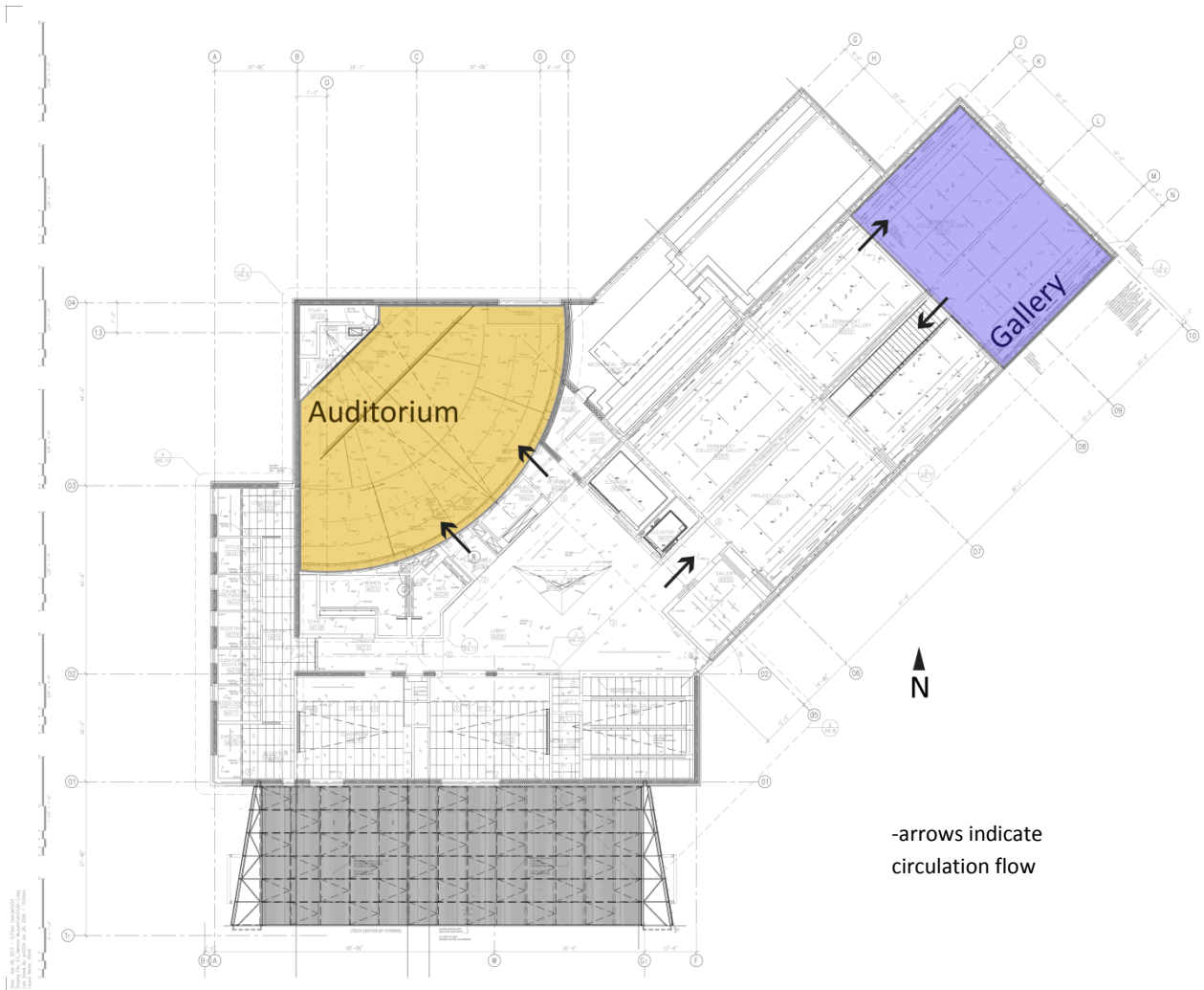
Proposed psychological impressions:

The café will be my area of psychological impression study. Here, the test will be to make the area feel *tension* and drama while still connecting it to the main circulations spaces.

Plan views:



1st floor



2nd floor